

we redefine

Blasting Cabinets



We offer a range of Shot Blast Systems to help our customers achieve the surface finish they need. We can cater to all your application requirements including descaling, removal of corrosion and scale, paint stripping, deflashing, shot peening and surface preparation prior to coating. We will offer you full support every step of the way.

we redefine:

- Vibratory Finishing
- High Energy Finishing
- Shot Blasting
- Consumables
- Precision Polishing
- Subcontract Services

Table of Contents

- [Shot Blasting Applications](#) pg. 4
- [Mobile Blasting Systems](#) pg. 6
- [ECO Blasting Systems](#) pg. 12
- [Premium Blasting Systems](#) pg. 16
- [Wet Blasting Cabinets](#) pg. 20
- [Wet Blasting System](#) pg. 22
- [Optional Extras](#) pg. 23
- [Automated Blasting Cabinets](#) pg. 24
- [Shot Blasting and Peening Media](#) pg. 28
- [ActOn Technology](#) pg. 30
- [Subcontract Services](#) pg. 32
- [Quality You Can See](#) pg. 33



Why Choose Us?

We're a family run business that pride ourselves on working as a strong, unified team of specialists.

We believe in British

Born in the United Kingdom, we are unique in our product design and the manufacture of our specialist machines and consumables.

We're here for you

Being based in the heart of the country means we have easy access to all of our clients.

We have experience

With five decades of experience and knowledge in the finishing industry, we know what works for you.

We provide options

We have an impressive range of media and compounds to choose from, including one of the best polishing compounds in the market. We also provide a wide range of machinery and subcontract services to meet all of your needs.

We go the extra mile

We'll tailor our services to your needs, not the other way round. Our service is all about you.



Shot Blasting Applications

We offer a range of Shot Blast Systems to help our customers achieve the surface finish they need every time. Whether you require to descale, remove corrosion, mill scale, paint or rust, achieve a smooth finish, deflash, polish or strengthen the metal we will offer you full support every step of the way.



Before



After



Before



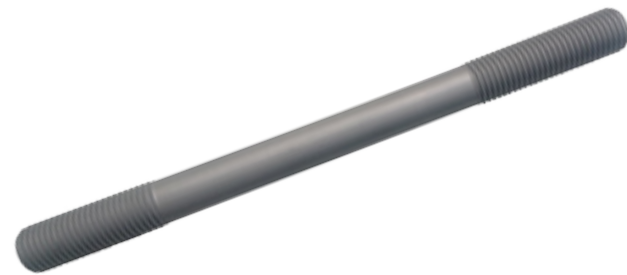
After



Before



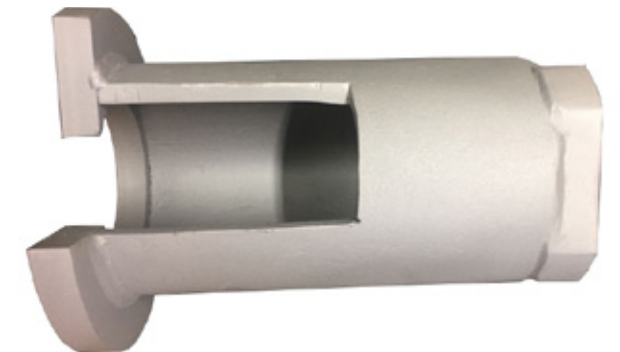
After



Before



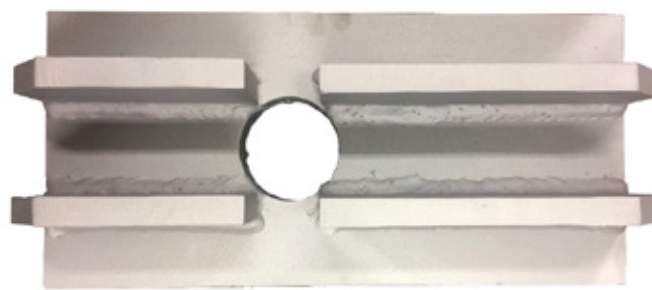
After



Before



After



Before



After



Mobile Blasting Systems

Our Mobile Blasting Series includes 3 models: Powertrack Junior, Powertrack and a Mobile Blast Room. These blasting machines will offer the perfect balance between productivity and portability. Some of the main advantages of the Mobile Blasting Series include:

- Are designed for a wide range of applications, including metal and stone finishing.
- Very economical and easy to operate.
- Easy to move.

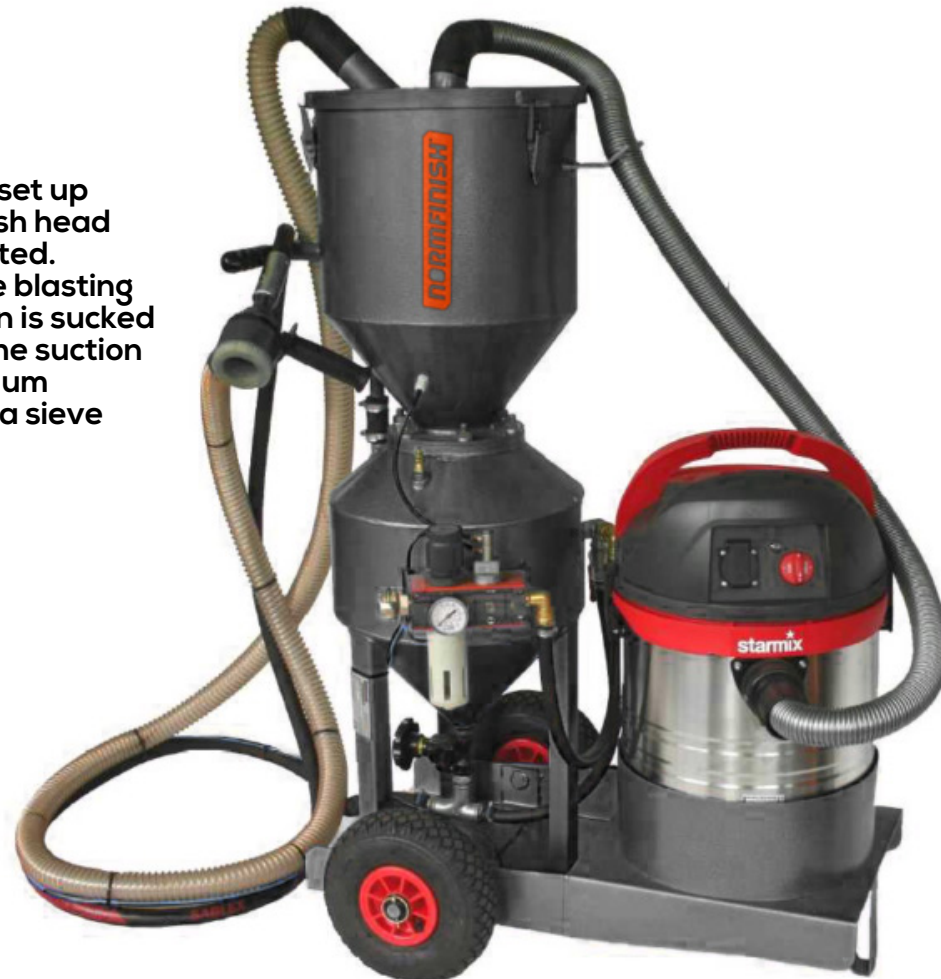
ActOn Powertrack Junior

ActOn Powertrack Junior has been designed to allow customer to easily blast in different locations. This blasting machine works on the pressure tank principle and is connected to compressed air and 230V electricity and delivers you mobile, dust-free blasting on a lower budget. The Powertrack Junior is perfect for blasting work in stonemasonry, shipyards and maintenance services.

How it works?

Switch on the blasting machine and set up the blasting pressure. Place the brush head on the surface that needs to be blasted. Through the manual switch start the blasting process. Abrasive, dust and pollution is sucked directly from the blasting head via the suction hose. The dust continues to the vacuum cleaner, the abrasive flows through a sieve into the bunker and is reused.

Click [here](#) to request a quotation today!



Key Benefits & Features

- For metal and stone blasting applications.
- All components are assembled into one compact unit.
- The suction blast head consists of blast nozzle, head with brush and handle.
- Length of the hose set is 4 meters.
- Different brushes are available.
- Suitable for blasting inside and outside corners.
- Dust-free blasting process.
- The blast vessel is equipped with an automatic pressure relief valve.

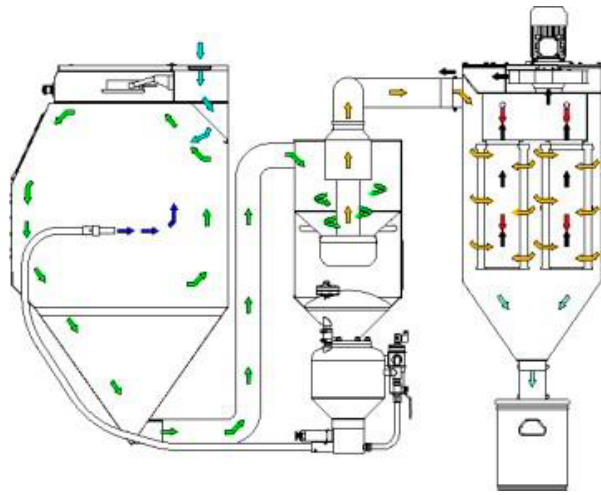
	Powertrack Junior
Overall Dimensions in mm/inch (L x W x H)	906 x 579 x 1294 / 35.6 x 22.8 x 51
Boron carbide blast nozzle	ø 4 mm
Vacuum cleaner power	Max 1,6 kW
Vacuum cleaner capacity	150 m ³ /h
Vacuum cleaner under pressure	120 mBar (= 30 kPa)
Power Supply	230V/50Hz
Air consumption at 3 bar and 4 mm nozzle	± 500 lt./min
Connecting pressure	4-5 bar, max 10 bar
Approx cabin weight in kg	65
Colours powder coating	Safire blue (= RAL 5003)

Sizes indicated above are standard. Custom sizes can be manufactured to suit specific applications. Dimensions are subject to change due to design improvements.



ActOn Powertrack

ActOn Powertrack is a mobile and economical pressure blasting solution. This blasting machine can be used with different types of fine-grained media. The ergonomic design and the application of advanced components in a compact construction guarantees a perfect system. The effective blast head and efficient abrasive cleaning ensure optimum abrasive efficiency.



Key Benefits & Features

- All components are assembled into one compact unit.
- Ergonomic design.
- Blasting media can be reused.
- PLC controled.
- Complete with cyclone, extraction and automatic filter cleaning.
- Dust-free blasting process.
- The suction blast head includes the blast nozzle, head with brush and handle.
- Available with aluminium head for blasting surfaces and stone head for engraving stone
- Length of the hose set is 5 meters.
- Different brushes are available.
- Suitable for blasting inside and outside corners.
- The cyclone ensures perfect blast media cleaning and a constant operating mixture.
- The cyclone is equipped with a wear resistance lining.

How it works?

Switch on the blasting machine and set up the blasting pressure. Place the brush head on the surface that needs to be blasted and turn on the gun safety switch. The abrasive is blasted onto the product and directly extracted through the brush head. The large-sized filter ensures that the emission remains well below the NER guidelines. Partly due to the automatic filter cleaning, maintenance is very limited and manufactured for long, trouble-free use. This results in dust-free blasting, without the use of a cabin. By reusing the blast abrasives, this pressure blasting unit delivers a high efficiency of the blasting medium and saves the costs.

	Powertrack
Overall Dimensions in mm/inch (L x W x H)	1413 x 1026 x 1810 / 55.6 x 40.4 x 71.3
Boron carbide blast nozzle	ø 6,3 mm (stone head) or 8 mm (aluminium head)
Filter cartridges (polyester, M-class)	2 filter cartridges of 4 m ² (=8 m ²)
Capacity ventilator	310 m ³ /h (3 kW)
Dust emission	< 1,8 mg/ Nm ³
Power Supply	3 x 400V, 50 Hz, earth and zero
Total power consumption	3,2 kW
Connecting pressure	± 3.000 lt./min
Approx cabin weight in kg	350
Colours powder coating	Safire blue (= RAL 5003)

Sizes indicated above are standard. Custom sizes can be manufactured to suit specific applications. Dimensions are subject to change due to design improvements.



ActOn Mobile Blast Room

The ActOn Mobile Blast Room includes a mobile shot blasting container and the LP2500 unit. The system is fully integrated with a blast vessel, media reclaim system with cyclone and a filter with automatic filter cleaning. The entire unit can be easily transported with standard transportation. After a quick installation, you can start blasting without the need for additional structures.

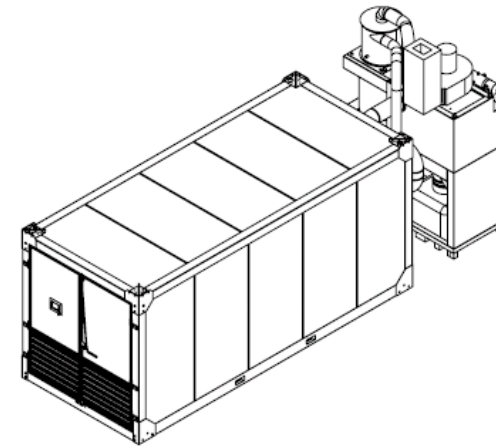


How it works?

After the system is switched on the blasting can start with a dead man's switch on the blast nozzle. The pop-up in the blast vessel closes, the dosage valve is opened and the blasting starts. Dust is sucked out of the blast room. After blasting the system is switched to media recuperation. The dust and contamination is removed from the blasting media in the cyclone. Dust is removed in the filter. Dust collection is in a sealed dust bin. The filter is cleaned automatically via reverse air pulses.

Key Benefits & Features

- Easily transported with standard transportation.
- Rapid installation, making immediate blasting possible.
- The blast room is set up with a flat steel floor, suction pit, PVC protective lining, lighting and air cleaning system.
- The walls of the blast room are made of sandwich panels to reduce noise.
- Blast room can also be equipped with extra access door, rubbing plate and scraper floor. (optional)
- The cyclone ensures perfect blast media cleaning and a constant operating mixture.
- The cyclone top is inside lined with wear resistant Linatex.
- Integrated filter unit with mid pressure ventilator, five filter cartridges and pressure vessel with automatic cartridge cleaning.
- PLC controlled.



Click [here](#) to request a quotation today!

LP2500 Blasting Unit

External dimensions in mm/inch (L x W x H)	2400 x 1350 x 3480 / 55.6 x 40.4 x 71.3
Filter cartridges (polyester)	5 filter cartridges of 13 m ² (=65 m ²)
Capacity ventilator	2500 m ³ /h – 2500 Pa (5,5 kW)
Dust emission	< 2 mg/ Nm ³
Membrane valves for cartridge cleaning	3 pieces 24 V – 1 inch
Pneumatic connection	1.1/4 inch supply tubing
Connecting pressure	6 - 10 bar
Blast nozzle (1 at choice included)	Type 6S32 (ø 6 mm)
	Type 8S32 (ø 8 mm)
	Type 10S32 (ø 10 mm)
Blast hose	1", 12 m included
Suction hose	ø 150 mm PU heavy duty, 5 m included
Power Supply	3 x 400V, 50 Hz, earth and zero, 32A
Total power consumption	7 kW
Approx. unit weight in kg	1100
Colours powder coating	Dark grey (=RAL 7015)

Blast Container

	External dimensions in mm/inch (L x W x H)	Internal dimensions in mm/inch (L x W x H)	Weight in kg	Lighting LED
10 Feet Container	3480 x 2480 x 2720 / 137 x 97.6 x 107	2940 x 2170 x 2360 / 115.7 x 85.4 x 92.9	1700	3 x 53W
20 Feet Container	6480 x 2480 x 2720 / 255.1 x 97.6 x 107	5940 x 2170 x 2360 / 233.8 x 85.4 x 92.9	2200	5 x 53W
6*3*3 m Container	6200 x 3360 x 3200 / 244 x 132.2 x 126	5630 x 3020 x 2850 / 221.6 x 118.8 x 112.2	2900	5 x 53W
12*3*3 m Container	12200 x 3360 x 3200 / 480.3 x 132.2 x 126	11630 x 3020 x 2850 / 457.8 x 118.8 x 112.2	4500	7 x 53W



ECO Blasting Systems

The ECO Blasting Series includes an economical range of Suction Blast and Pressure Blast machines. These machines have been designed to allow you to minimise your investment while enjoying the benefits of a good quality shot blasting machine.

Key Features and Benefits

- Rapid and efficient blasting.
- Blasting process free of interruption.
- Permanent visibility due to optimal circulation of air and dust filtering.
- Solid construction.
- Comfortable arm holes.
- Good dust sealing.
- Large viewing window.
- Loading via large doors.
- Adjustable blast pressure.
- Filtercartridge.



ECO M104 Blasting System



Cabinet - inside view



ECO M104 Blasting System with cyclone and filter room

ECO MI Series

ECO MI is a professional and compact Suction Blast cabinet built to achieve a rapid and efficient finish.

	ECO MI 02	ECO MI 03	ECO MI 04
Blast Chamber Dimensions in mm/inch (W x D x H)	790 x 790 x 850 / 31.1 x 31.1 x 33.5	1100 x 800 x 850 / 43.3 x 31.5 x 33.5	1105 x 795 x 875 / 43.5 x 31.3 x 34.4
Overall Dimensions in mm/inch (W x D x H)	925 x 1240 x 1980 / 36.4 x 48.8 x 77.9	1250 x 1280 x 1925 / 49.2 x 50.4 x 75.8	1225 x 1340 x 2095 / 48.2 x 52.7 x 82.5
Working Height in mm/inch	900 / 35.4	860 / 33.8	825 / 32.5
Door Opening in mm/inch (W x H)	690 x 750 / 27.2 x 29.5	750 x 745 / 29.5 x 29.3	695 x 745 / 27.3 x 29.3
Machine Weight in kg	220	260	360
Illumination	20 Watt LED	20 Watt LED	20 Watt LED
Maximum Load in kg	350	350	350
Filter cartridge	1 x 4m ²	1 x 4m ²	1 x 21m ²
Power Supply	230V/50Hz/0.65 kW	230V/50Hz/0.65 kW	230V/50Hz/0.85 kW
Air Consumption	0,6-1,0 m ³ at 6 bar	0,6-1,0 m ³ at 6 bar	0,6-1,0 m ³ at 6 bar

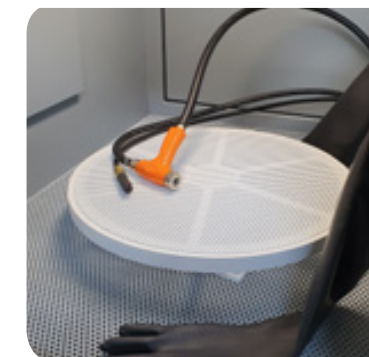
Sizes indicated above are standard. Custom sizes can be manufactured to suit specific applications. Dimensions are subject to change due to design improvements.



ECO M102 Blasting System



ECO M102 Blasting System with filter room



ECO Blasting System Turntable

Click [here](#) to contact us for a Free Finishing Trial today!

ECO MP Series

ECO MP is a professional and compact Pressure Blast cabinet built to achieve a rapid and efficient finish.

	ECO MP 02	ECO MP 04
Blast Chamber Dimensions in mm/inch (W x D x H)	790 x 790 x 850 / 31.1 x 31.1 x 33.5	1105 x 795 x 875 / 43.5 x 31.3 x 34.4
Overall Dimensions in mm/inch (W x D x H)	925 x 1240 x 1980 / 36.4 x 48.8 x 77.9	1225 x 1340 x 2095 / 48.2 x 52.7 x 82.5
Door Opening in mm/inch (W x H)	690 x 750 / 27.2 x 29.5	695 x 745 / 27.3 x 29.3
Working Height in mm/inch	900 / 35.4	825 / 32.5
Approx. Machine Weight in kg	235	380
Illumination	20 Watt LED	20 Watt LED
Maximum Load in kg	350	350
Filter Cartridge	1 x 4m ²	1 x 21m ²
Power Supply	230V/50Hz/0,65 kW	230V/50Hz/0,85 kW
Air Consumption	±3,0 m ³ at 4 bar	3,0 m ³ at 4 bar

Sizes indicated above are standard. Custom sizes can be manufactured to suit specific applications. Dimensions are subject to change due to design improvements.



14 ECO MP04 Blasting System



ECO MP04 Blasting System with cyclone and filter room



ECO MP02 Blasting System



ECO MP02 Blasting System with filter room



ECO MP04 Blasting System



Premium Blasting Systems

The Premium Blasting Series includes a range of Suction Blast, Wet Blast and Pressure Blast machines. These machines have been designed for blasters with high requirements when it comes to blasting results, user convenience, safety and environment. All components are assembled, according to ISO-certification, to create a compact turn-key unit.

DI Suction Blasting Cabinets

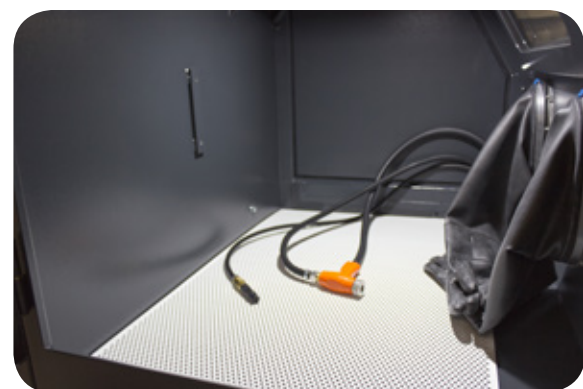
The DI Suction Blasting cabinets are equipped with a cyclone, which guarantees that the abrasive is cleaned perfectly. This results into less wear and better visibility. The suction blast pistol ensures, in combination with the mixing chamber, a constant optimum mix of pressurized air and abrasive, to offer an effective and efficient blasting process.

Key Features and Benefits

- Efficient powerful blasting.
- Blasting process free of interruption.
- Continuous clear view due to optimal circulation of air.
- Cabinet without foundations, compact construction.
- Efficient cleaning of abrasives by cyclone.



Filling hopper cyclone



Cabinet - inside view



DI12 Suction Blasting Cabinet

DI12 Suction Blasting Cabinet with cyclone and filter room



Click [here](#) to request a quotation today!

	DI12	DI14
Blast Chamber Dimensions in mm/inch (W x D x H)	1105 x 800 x 800 / 43.5 x 31.5 x 31.5	1370 x 940 x 830 / 53.9 x 37 x 32.6
Overall Dimensions in mm/inch (W x D x H)	1220 x 1275 x 2035 / 48 x 50.2 x 80.1	1485 x 1620 x 2191 / 58.4 x 63.7 x 86.3
Door Opening in mm/inch (W x H)	692 x 640 / 27.2 x 25.2	835 x 670 / 32.8 x 26.4
Working Height in mm/ inch	840 / 33.1	840 / 33.2
Approx. Machine Weight in kg	380	480
Illumination	1 x 20 Watt LED	1 x 20 Watt LED
Maximum Load in kg.	350	350
Filter Cartridge (polyester - class M)	1 x 4m ²	2 x 4m ²
Power Supply	230V/50Hz/0,85 kW	230V/50Hz/0,85 kW
Air Consumption at 6 bar and 8mm nozzle	±800 - 1000 lt./ min	±800 - 1000 lt./ min

Sizes indicated above are standard. Custom sizes can be manufactured to suit specific applications. Dimensions are subject to change due to design improvements.



Pressure gauge for displaying system pressure



Door safety switches



Rotary basket with blast gun holder

DP Pressure Blasting Cabinets

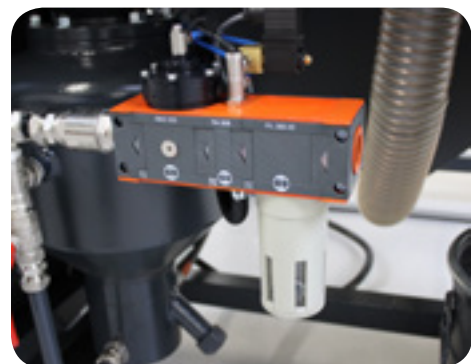
The DP Pressure Blasting cabinets are equipped with a cyclone, which guarantees that the abrasive is cleaned perfectly. This results into less wear and better visibility. The pressure pot is equipped with a dosage cylinder which always ensures the right mix of abrasive and pressurized air. Also, the dosage cylinder controls a constant flow of an abrasive, even at the start of the blast process. This results in an effective and efficient blast process.

Key Features and Benefits

- Efficient powerful blasting.
- Blasting process free of interruption.
- Continuous clear view due to optimal circulation of air.
- Cabinet without foundations, compact construction.
- Efficient cleaning of abrasives by cyclone.
- Optimal blast media dosage with dosage valve.

	DP 12	DP 14	DP 17	DP 22
Blast Chamber Dimensions in mm/inch (W x D x H)	1170 x 940 x 885 / 46 x 37 x 34.8	1370 x 1040 x 940 / 53.9 x 40.9 x 37	1700 x 1400 x 1090 / 66.9 x 55.1 x 42.9	2200 x 1400 x 1090 / 86.6 x 55.1 x 42.9
Overall Dimensions in mm/inch (W x D x H)	1285 x 1520 x 2106 / 50.6 x 59.8 x 82.9	1485 x 1620 x 2191 / 58.4 x 63.7 x 86.3	1854 x 2073 x 2395 / 72.9 x 81.6 x 94.3	2350 x 2073 x 2395 / 92.5 x 81.6 x 94.3
Door Opening in mm/inch (W x H)	835 x 725 / 32.8 x 28.5	935 x 785 / 36.8 x 30.9	1265 x 925 / 49.8 x 36.4	1265 x 925 / 49.8 x 36.4
Working Height in mm/inch	800 / 31.5	800 / 31.5	800 / 31.5	800 / 31.5
Approx. Machine Weight in kg	550	705	1180	1430
Illumination	1 x 50 W LED	1 x 50 W LED	2 x 50 W LED	2 x 50 W LED
Maximum load in kg.	500	500	1000	1000
Filter Cartridge	2 x 4m ²	3 x 4m ²	2 x 21m ²	3 x 21m ²
Power Supply	415V/50Hz/1.2kW	415V/50Hz/1.6kW	415V/50Hz/3.3kW	
Air Consumption	3000 liter/ min at 4 bar			

Sizes indicated above are standard. Custom sizes can be manufactured to suit specific applications. Dimensions are subject to change due to design improvements.



Filter regulator unit



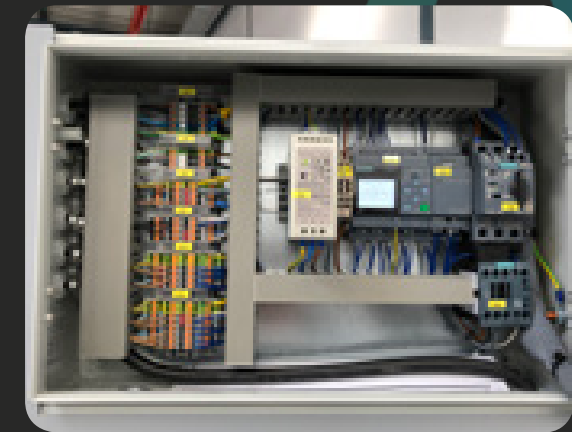
Easy to replace splash glass



Dosage valve



DP14 Pressure Blasting Cabinet



Logo-control with automatic fan stop



HEPA filter



DP14 Pressure Blasting System with cyclone and filter room

Wet Blasting Cabinets

ActOn range of Wet Blasting Cabinets include an economical option (AWB-1100) & a premium series (NP12).

AWB-1100 Wet Blasting Cabinet

The AWB-1100 is a wet blasting cabinet ergonomically designed for easy operation in sitting or standing position, for cleaning, descaling, deburring, roughening, oil or grease removal, die cleaning. This machine is suitable for blasting with all kinds of inert abrasives.

Key Features

- Stable cabinet, sturdily constructed of mainly SS sheet with sectional reinforcements.
- 1 large stainless steel swing door with seals, gutter and safety switch arrangement.
- In cabinet-top integrated LED lighting unit for optimum vision in the blast-chamber
- Angled full view, hardened glass security window, provided with electric wiper motor and wiper arm / wiper blade.
- Replaceable operator protective abrasive resistant full length rubber gloves.
- Glandless vertical polypropylene slurry pump with 3000 rpm electric motor.
- Pressure regulator to control air flow.
- Electrically operated foot pedal.
- Internal blast chamber lined with plastic sheets for protection.



NP Wet Blasting Cabinet

The NP Wet Blasting cabinets are equipped with a special pump that achieves a constant flow of blast media and water to the blast nozzle. The media and water is mixed with pressurized air to add extra power and speed to the mix. The result is a very smooth finished component. The water and abrasive are collected in a funnel, and the pump provides an agitation so that the abrasive continues to "float".

NP Wet Blasting cabinets are perfect for applications such as cleaning, descaling, deburring, roughening, oil or grease removal, die cleaning as dimensions are not affected, or to achieve a smoother surface in compliance with HACCP. These machines can be used with all kinds of inert abrasives.

Key Benefits

- Dust-free blast process.
- De-grease and blast in one process.
- Almost zero impression of the abrasive in the surface.



NP12 Wet Blasting Cabinet with cyclone and filter room

	NP 12	AWB-1100
Blast Chamber Dimensions in mm/inch (W x D x H)	1100 x 940 x 820 / 43.4 x 37 x 32.3	1100 x 1000 x 800 / 43.4 x 39.4 x 31.5
Overall Dimensions in mm/inch (W x D x H)	1250 x 1360 x 1850 / 49.2 x 53.5 x 72.8	1465 x 1700 x 1800 / 57.7 x 66.9 x 70.8
Door Opening in mm/inch (W x H)	830 x 720 / 32.6 x 28.3	860 x 710 / 33.8 x 27.9
Floor Working Height in mm/ inch	810 / 31.8	1080 / 42.5
Approx. Machine Weight in kg	450	370
Air Consumption	1.100-2.200 literst./min (8 mm nozzle), depending on adjustment of water pump and air injector.	1.100-2.200 lt./min (8 mm nozzle), depending on adjustment of water pump and air injector.
Power Supply	230V/ 50Hz	415V/ 50Hz

Sizes indicated above are standard. Custom sizes can be manufactured to suit specific applications. Dimensions are subject to change due to design improvements.

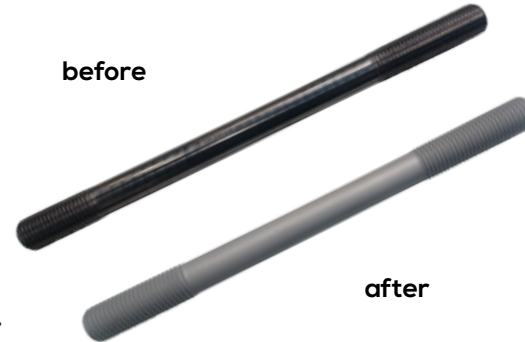
Click [here](#) to request a quotation today!

Wet Blasting Automated System

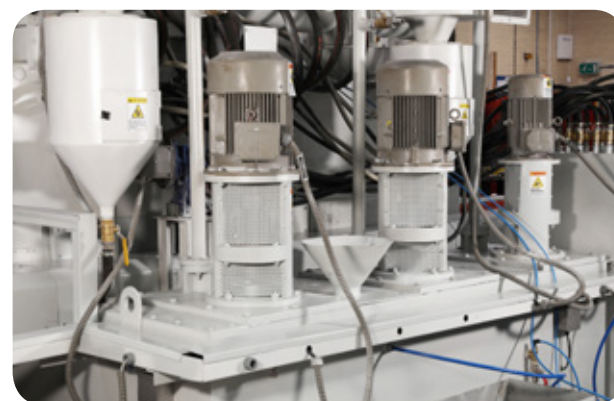
We designed this Automated Wet Blast machine for blasting of shafts prior to coating. The system consists of two blasting lines which can blast up to 70mm Ø shafts. Parts travel through the blast chamber and then enter the water wash chamber to remove any residue that may be on the components. The parts are then air dried before exiting.

Key Benefits

- Consistent finish across all parts.
- Fully automated system.
- Fast throughput rate.
- Programmable recipes.
- Adjustable settings including conveyor & pump speeds.
- British built high-quality vibratory bowls.
- Efficient in operation.



22 Air dry chamber



Slurry tank and pumps

Optional Extras

ECO Blasting Systems

Optionals	MI02	MI03	MI04	MP02	MP04
Turntable for manual operation.	<input type="checkbox"/>	<input type="checkbox"/>	<input type="checkbox"/>	<input type="checkbox"/>	<input type="checkbox"/>
Complete conveyor system, with turntable for manual operation, dustproof central bearings			<input type="checkbox"/>		<input type="checkbox"/>
Blast gun support			<input type="checkbox"/>		<input type="checkbox"/>
Rubber lining back and door protection			<input type="checkbox"/>		<input type="checkbox"/>
Door tunnel to handle long parts. Includes PVC curtains & slide door.			<input type="checkbox"/>		<input type="checkbox"/>

Premium Blasting Systems

Optionals	DI12	DI14	DP12	DP14	DP17	DP22
Stationary turntable.	<input type="checkbox"/>	<input type="checkbox"/>	<input type="checkbox"/>	<input type="checkbox"/>	<input type="checkbox"/>	<input type="checkbox"/>
Rail transport system outside the cabinet.	<input type="checkbox"/>	<input type="checkbox"/>	<input type="checkbox"/>	<input type="checkbox"/>	<input type="checkbox"/>	<input type="checkbox"/>
Blast gun-support, to fix the nozzle in various positions	<input type="checkbox"/>	<input type="checkbox"/>	<input type="checkbox"/>	<input type="checkbox"/>	<input type="checkbox"/>	<input type="checkbox"/>
Wear resistant lining	<input type="checkbox"/>	<input type="checkbox"/>	<input type="checkbox"/>	<input type="checkbox"/>	<input type="checkbox"/>	<input type="checkbox"/>
Cyclone with removable lid & wear resistant linatex lining	<input type="checkbox"/>	<input type="checkbox"/>	<input type="checkbox"/>	<input type="checkbox"/>	<input type="checkbox"/>	<input type="checkbox"/>
Extra HEPA filter	<input type="checkbox"/>	<input type="checkbox"/>	<input type="checkbox"/>	<input type="checkbox"/>	<input type="checkbox"/>	<input type="checkbox"/>

Wet Blasting Systems

Optionals	NP12
Air-driven pump in the settling tank to re-use the waste water for cleaning parts and rinsing the window	<input type="checkbox"/>
Stainless steel turntable, placed in the cabinet	<input type="checkbox"/>

Technical Differences Between ECO MP Range & Premium DP Range

ECO Blasting Systems	Premium Blasting Systems
Good quality blast cabinets	High end blast cabinets
Suction and pressure blasting	Very high quality
For regularly blasting	Suction and pressure blasting
Some options available	Suitable for continuous blasting
Not suitable for automaton	Wide range of options available
Not suitable for steel blast media and bigger sizes.	Suitable for automation
Good dust separation	Suitable for many types of blast media including steel media
	Very good dust separation
ECO MP Range	Premium DP Range
More simple dosage system	Very good dosage system
½" air supply	¾" air supply
Up to 8 mm blast nozzle	Up to 10 mm blast nozzle
Non adjustable cyclone	Adjustable cyclone
One filter cartridge	2 or 3 filter cartridges
Light steel construction	Heavy steel construction
Max load 250 kg	Max load 500 kg

Automated Blasting Cabinets

Automated blasting cabinets reduce manual handling and ensure a consistent process. Our automated systems are operator friendly, and can be custom built to suit your needs. Whether you require to deburr, descale, remove corrosion, mill scale, paint or rust, achieve a smooth finish, deflash, polish, shot peening or remove powder from components of different sizes we will offer you full support every step of the way.

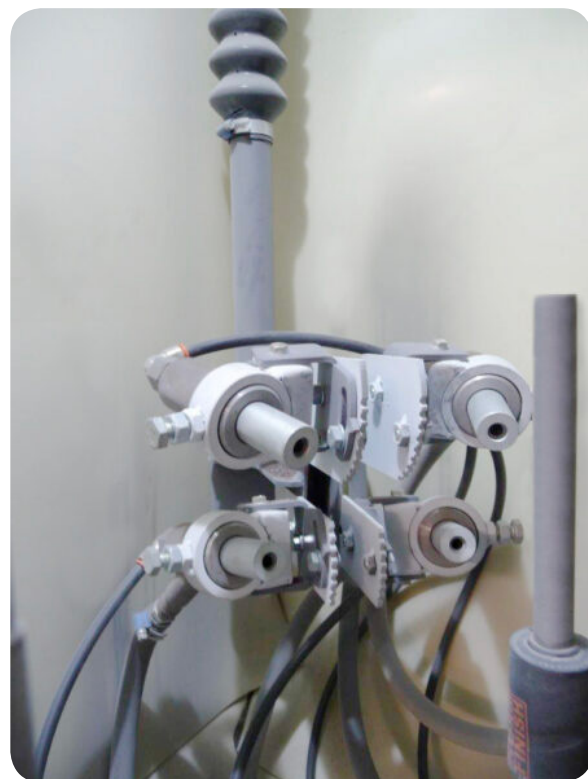
Satellite Blasting Cabinets

The Satellite Blasting Cabinets have been built to allow you to process complex parts. One of the main advantages of this system is the fact that components do not come into contact, hence any possible part damages is avoided.

These cabinets are perfect for applications such as die cleaning, removing rolling skin from forged parts, fine blasting, and polishing.

Key Features

- Available in various specifications.
- Integrated table with multiple satellites in one system, hence parts are changed within the unit.
- Includes mobile table with satellites, making it possible for parts to be exchanged outside the unit.
- Continuous exchange of parts during the process.



Drum Blasting Cabinets

The Drum Blasting Cabinets have been built to allow you to process small parts. These machines are widely used in the 3D Printing industry. When blasting Aluminium, Titanium, PA or PP parts, an explosion-proof execution is necessary. This can consist of a cell wheel lock, rupture disk, non-return valve, flow control, Ex. motor and fan.



Transit Blasting Cabinets

The Transit Blasting Cabinets have been designed to achieve a matt, deburred or rough finish. After parts are placed in the machine, the doors close. Components are then blasted by an oscillating movement of the nozzles (from front to back) and a stroke movement in the horizontal plane of the parts. The blasting can be carried out on top, bottom or both sides. Can be easily integrated with other production machines and it can blast as a batch system or a continuous system.



Turntable Blasting Cabinets

The Turntable Blasting cabinets are suitable for blasting bigger / heavier, often round components. Products are placed on a turntable and are blasted by the rotation of the table in combination with the oscillating nozzle movement. The turntable can be placed permanently in the cabinet. Or brought outside the cabinet with a transport system, so that loading using a crane/ forklift is possible

Finishing applications include deburring, cleaning, shot peening and roughening.



Internal Blasting Cabinets

The Internal Blasting Cabinets are suitable for the internal clean blasting of hollow components, such as gas cylinders, fire extinguishers, diving tanks, etc. After parts are placed inside the system, these are rotated and the nozzle makes an upward and downward movement, thus finishing the components.

Click [here](#) to request a quotation today!



Shot Peen Blast Installations

The blasting medium is sieved and it is optional possible to control the roundness. The dosage of the blasting medium can optionally be controlled. This can be carried out in all the above-mentioned blast cabinets.



Rollers and Tubes Blasting Cabinets

The Turntable Blasting cabinets are suitable for simultaneous blasting of pipes or other long round components. Finishing applications include cleaning, shot peening and roughening.

Key Features

- Different designs can be developed
- Parts rotate and are transported through the installation during the blast process.
- Adjustable speed.



Shot Blasting and Peening Media

ActOn offers a wide range of Abrasive Consumables for shot blasting and peening processes. Selecting the right blasting media is essential and depends upon the condition of the material before blasting and the finish required after blasting.

Metallic Blasting Media

ActOn metallic blasting media range includes:

- **Steel shot:** great for cleaning, stripping, smoothing, polishing and improving a metal surface.
- **Steel grit:** an aggressive blasting media, used for removing any contamination from steel and foundry metals & to obtain an etched surface finish on components manufactured out of hard metals.
- **Chilled iron grit:** recommended for quick cleaning, etching and roughening up hard surfaces. This is a hard abrasive media, suitable for blasting rooms.

- **Cut wire shot:** available in stainless steel, aluminium, copper, zinc and nickel version, this can be used for peening, cleaning & vibratory finishing.



Aluminium Oxide

An aggressive and tough media suitable for different applications such as general blasting, surface finishing, grinding, polishing, matte finishing, edge rounding and cleaning and preparing the component surface prior to plating or painting.

Aluminium oxide is a durable abrasive media which can be recycled a number of times, making it a cost effective solution. Aluminium Oxide is much lighter than other medias, thus minimising the possibility of parts made out of thin materials being damaged in the finishing process.

Nonetheless, Aluminium Oxide has the properties which allow this media to deburr parts made from hard metals and sintered carbide.

ActOn offers the following options:

- **Brown Aluminium Oxide** (high performance for aerospace and automotive industries).
- **White Aluminium Oxide** (commonly used in the medical industry).



Walnut Shell

Walnut shell is great for removing coatings, cleaning, deburring and de-flashing. This media is hard and fibrous and it is known as 'soft abrasive'. Being extremely durable it can be reused in all types of blasting equipment.

ActOn walnut shell is bovine free.



Silicon Carbides

Silicon carbide is the most aggressive and tough media recommended for general blasting, glass and stone etching, aggressive deburring, scale removal and smoothing components' edges. ActOn silicon carbide is a very fast cut media and due to its hardness, it takes less time to process the components in comparison to other blasting media. Hence this media can be reused for a longer period of time, making it also a cost effective product.



Glass Beads

Glass beads are great for obtaining a clean, smooth, bright or satin finish. This media is a cost effective solution as it can be recycled. Glass beads are mainly used in the shot blasting cabinets.



Brown, Pink and White Alumina

We recommend using ActOn Alumina media for corrosion removal, cleaning, etching and decorating.

- **Brown Alumina:** a fast cutting and tough media, widely used in the aerospace and automotive industry.
- **White Alumina:** ideal for processes where no contamination is allowed, being used for finishing materials such as titanium, stainless steel, crystal glassware.
- **Pink Alumina:** tougher than the white one being used both in wet and dry blasting process. Applications include removal of scale, paint, rust, hard deposits, cleaning, matte finishing, decorative finishing and glass frosting.

Plastic Blast Media

ActOn plastic blast media is recommended for paint and coatings stripping from components manufactured out of soft metals, plastic and composites. This media is widely used in aerospace and automotive industry for blasting applications.



Ceramic Beads

Ceramic beads can be used to process steel, aluminium, and non-ferrous alloys. Applications include cleaning, smoothing, satin finishing, removal of coatings, rust and oxides and deburring. This is a tough media that can be used both in the air and wet blasting process.



we manufacture



Bowls

Each of our Bowls are simple to operate, highly efficient, and manufactured in classic designs and sizes to meet your unique applications.



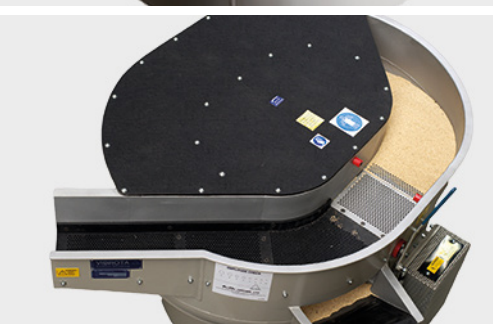
Troughs

We offer Troughs in many different sizes and an infinite choice of length and width combinations, making them one of our most versatile. These are particularly useful for larger components.



Duals

The orbital Dual finisher works to both deburr and dry in one single unit. This is both an excellent and economical finishing option.



Dryers

Our unique, elliptical-shaped Vibratory bowl drying machines are compact in size, and simple to operate. The design provides the flexibility to use it as an effective 1 lap drying process or a multi lap process. We also offer centrifugal dryers, conveyorised ovens and rotary dryers.



Wheel Polisher

Suitable for achieving a highly polished finish on wheels with different sizes (up to 610 mm), the AWP188 machine has been designed to be simple to operate and to produce excellent results. The wheel polisher is great for grinding, smoothing and polishing processes.



Centrifugal High Energy

Engineered with the latest technology, the drive mechanism is designed to produce high g-forces, resulting in shorter process times. This technology can be used for both wet and dry processes.



Centrifugal Disc Finishing

Centrifugal Disc finishing machines have been designed to be reliable and easy to operate. The spinning motion of the disc machine is given by the disc situated at the bottom of an open barrel. The rotating disc makes the media, compound and parts to move in a rolling motion, resulting in effective finishing process in the shortest time.



Wheel Blasting Systems

At ActOn we now offer a range of Wheel Blast Systems to help you achieve the surface finish you need. We can cater to all your application requirements including descaling, removal of corrosion or rust, paint stripping, de-flashing, achieving a smooth finish, shot peening, polishing and surface preparation prior to coating.



DLyte Technology

DLyte Finishing Technology is a fully automatic finishing system which enables you to deburr, grind, surface finish & mirror polish in one step. It is used for metal parts which require high performance or superior finishes, including steel and stainless-steel, cobalt chrome, titanium, nickel and other common metal alloys.



Waste Water Treatment

During the finishing operation, the effluent can be polluted with oil, media and metal fines. Our customers trust us to help select a waste water treatment system that complies with the industry's growing regulations. Once processed, the effluent is treated in the ActOn centrifuge system before being discharged to the drain or recycled.

Subcontract Service

On top of our state-of-the-art machinery and media, we also supply a range of support & training services. Moreover, we'll tailor our services & products to your needs, not the other way around. Our finishing service is all about you.

We suit our Finishing Technology and Subcontract Services to cover your needs. From a proved surface finishing technology we will adapt it according to your requirement. Just [contact us](#). We will do the rest.

Custom project development:



Don't just think about it. It's now time to **ActOn** it.

Did you know we also offer wheel blasting solutions?
Check our Wheel Blasting Brochure for more technical details.



CHEF, CLM, CDF, Shot Blasting & Vibratory Finishing Subcontract



Inspection Services



Installation, Training, Maintenance Services



Equipment Refurbishment & Spare Parts Service

What Our Customers Say

“Professional, knowledgable, on-time, good value and friendly. You couldn’t want for more. ActOn are always the first place on our list for part finishing.”

Samuel Nottage-McNeice, MAVEN Technology

“ ActOn were quick to develop a solution for the shell cleaning system. The disc finishing machine has improved our throughput significantly and we are pleased with the quality of machine that they have manufactured and installed. We look forward to working with ActOn on future collaborative projects.”

Henry Illsley (Shell Process Engineer), Rolls Royce Bristol



Quality You Can See

We pride ourselves on our excellence, and over the years we have successfully demonstrated an ongoing compliance with ISO quality and environmental standards. We’re also an approved supplier for many of our industries, including medical and aerospace.

For ISO, we currently hold:



“ The bitterness of poor quality remains long after the sweetness of low price is forgotten. ”

Benjamin Franklin

we redefine

ActOn Finishing Ltd.
213 Torrington Avenue
Tile Hill, Coventry
CV4 9HN
United Kingdom.

+44 (0) 24 7646 6914

enquiries@acton-finishing.co.uk

www.acton-finishing.co.uk

ActOn Finishing Sdn. Bhd
73 & 74 Jalan Perusahaan Waja 2,
Taman Perindustrian Waja,
09000 Kulim, Kedah,
Malaysia.

+60 (0) 4489 1532

myadmin@acton-finishing.my

www.acton-finishing.my